

Longtom-4 H LWD RT 200MD

IDEAL Version: ID13_0C_08 <MD> Vertical Scale: 1:200

Graphics File Created: 05-Aug-2008 04:21

PIP SUMMARY

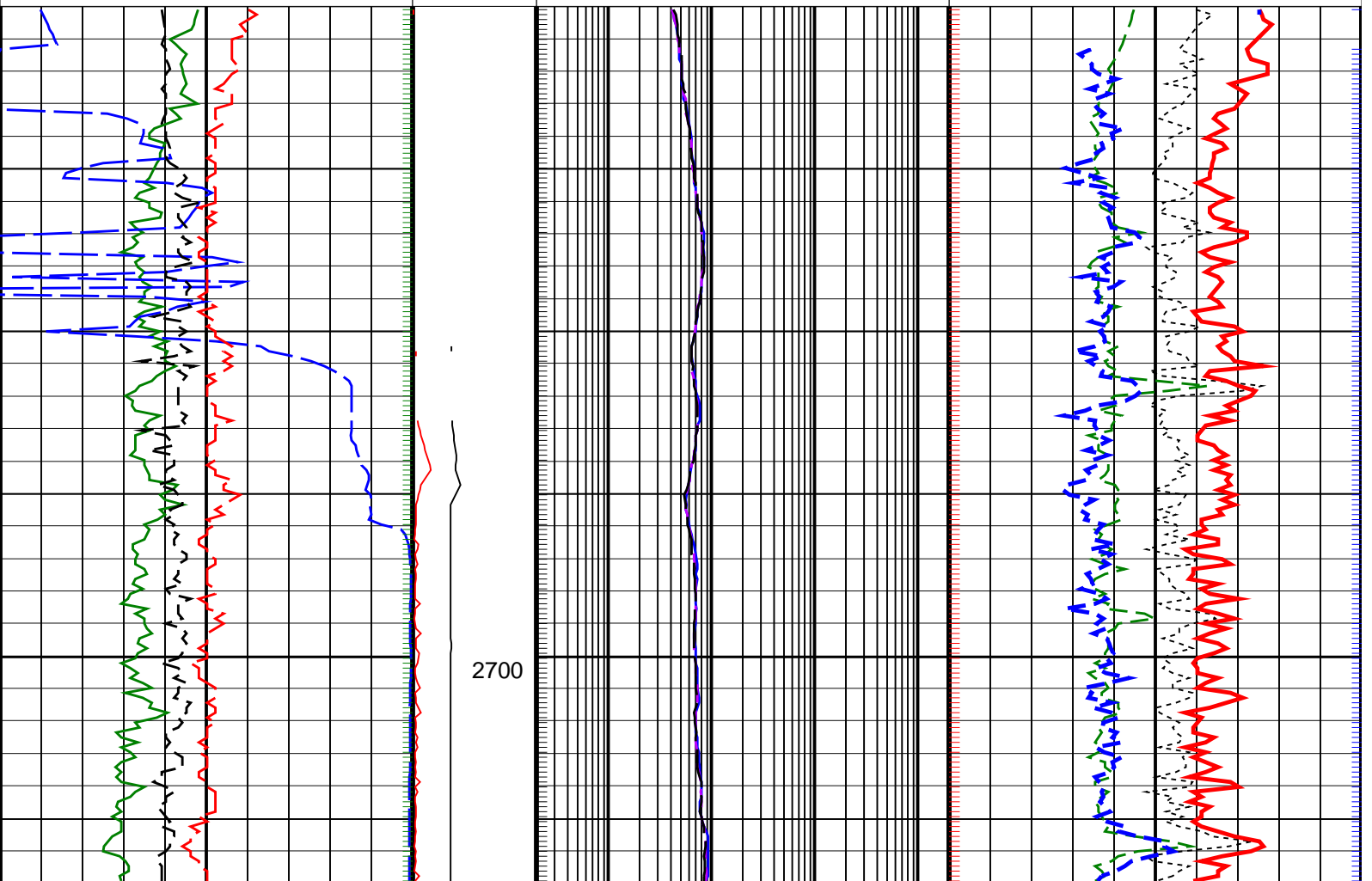
Density Samples +

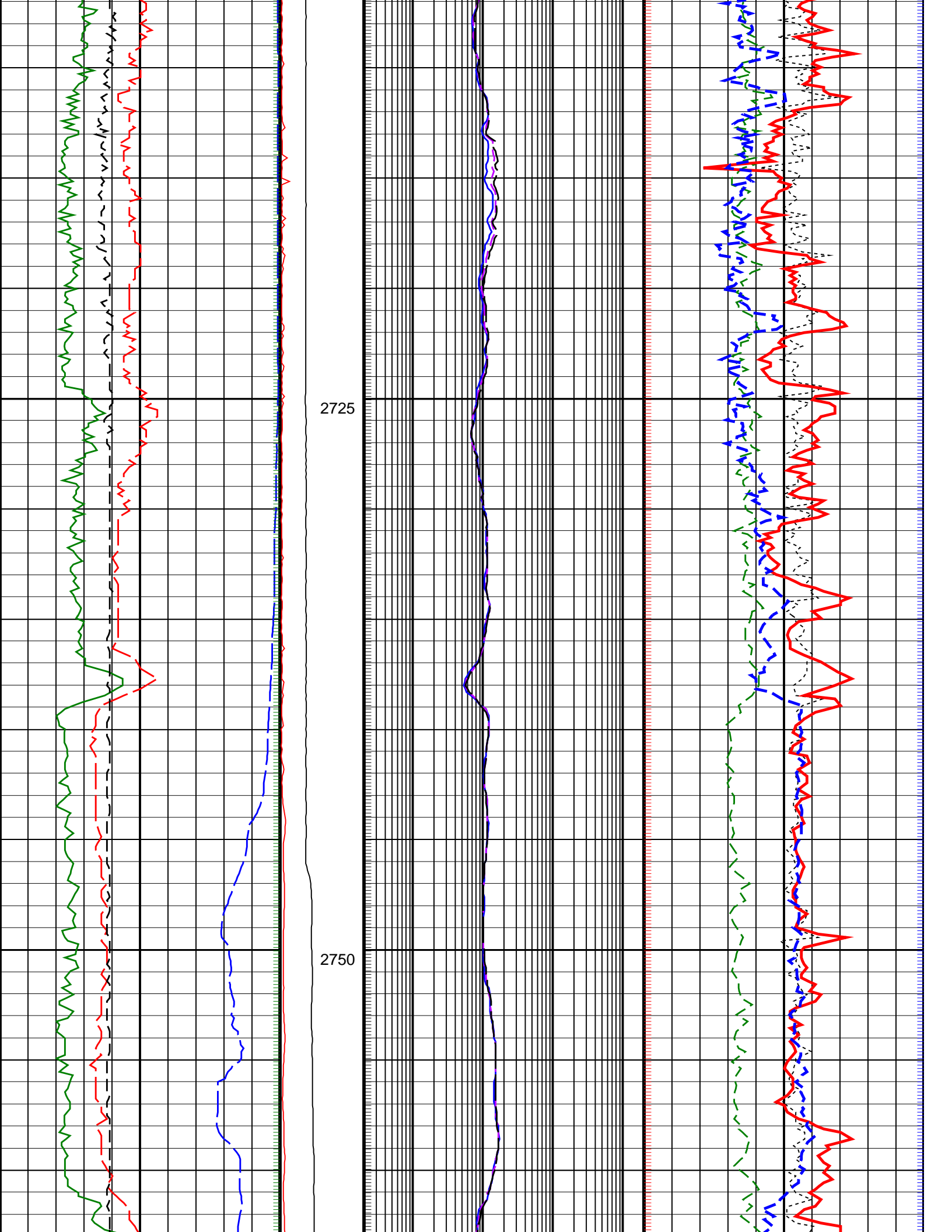
+ Gamma Ray Samples

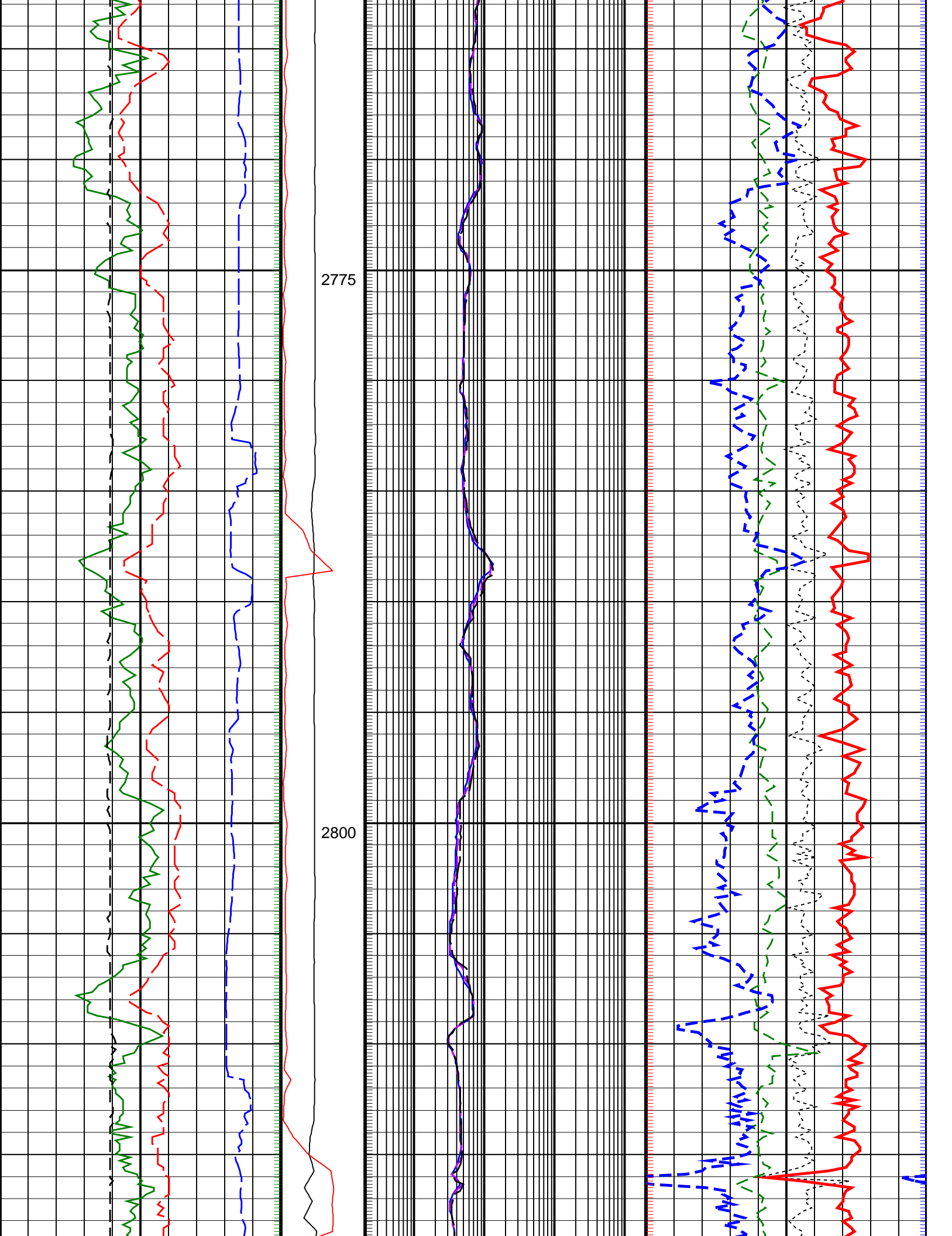
Neutron Samples +

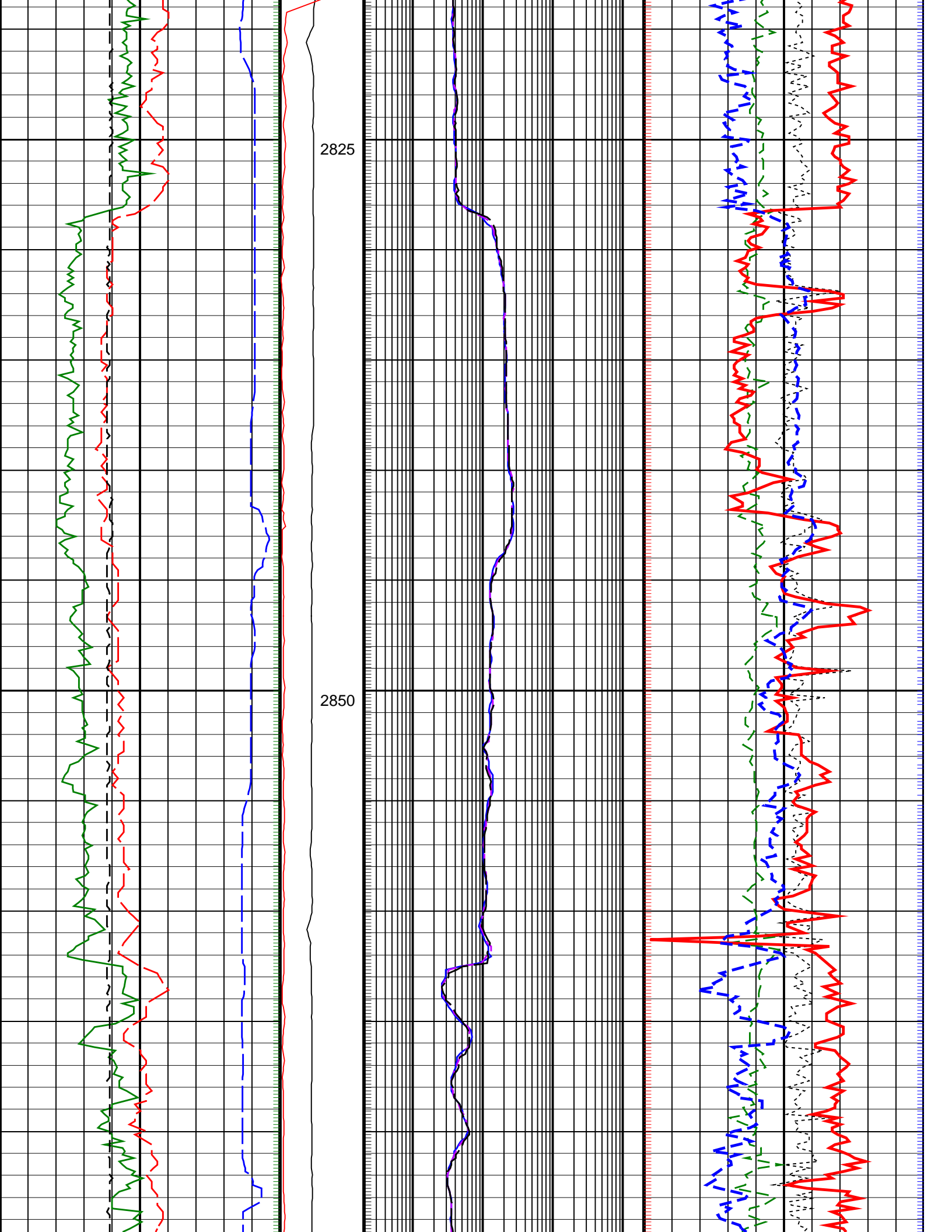
+ Resistivity Samples

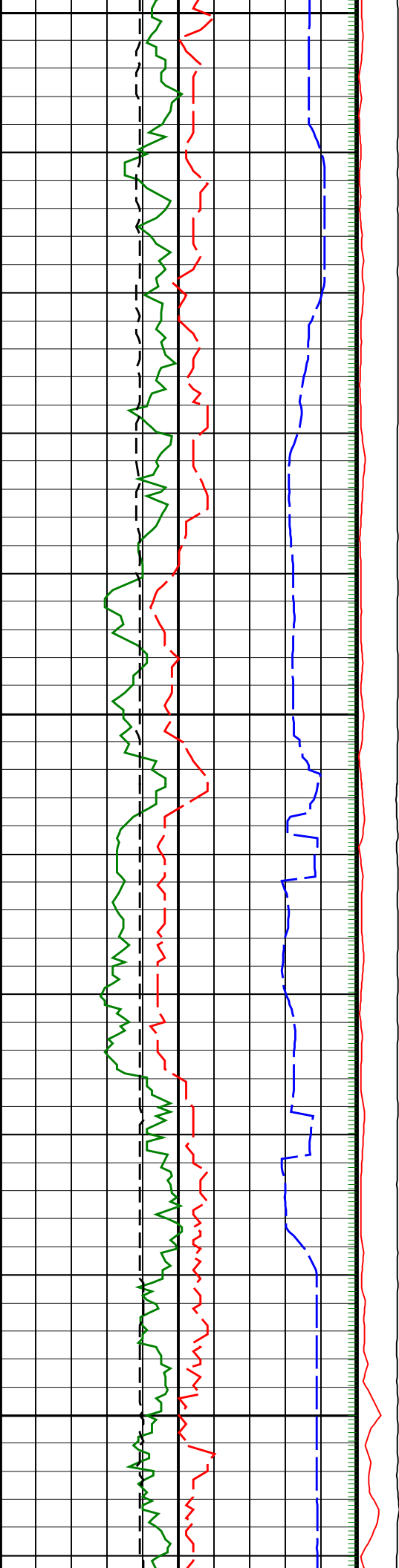
Ultrasonic Caliper, Average Diameter, Real-Time, Computed Downhole (UCAV_DH_ECO_RT) 6 (IN) 16		Thermal Neutron Porosity, Average, Real-Time (TNPH_ECO_RT) (PU) 45 -15	
Raw Formation Sigma, Average, Real-Time, Computed Downhole (RFSA_DH_ECO_RT) (CU) 0 50		ARC Phase Shift Resistivity 40 inch at 2 MHz, Real-Time (P40H_ECO_RT) (OHMM) 0.2 2000	Bulk Density, Bottom, Real-Time, Computed Downhole (ROBB_DH_ECO_RT) (G/C3) 1.85 2.85
Gamma Ray, Average, Real-Time (GRMA_ECO_RT) (GAPI) 0 200		MWD Collar RPM (CRPM_RT) (RPM) 0 400	ARC Phase Shift Resistivity 28 inch at 2 MHz, Real-Time (P28H_ECO_RT) (OHMM) 0.2 2000
ROP*5 (ROP5) (M/HR) 200 0		PKPK_RPM (Stick_RT) (RPM) 0 400	Photoelectric Factor, Bottom, Real-Time, Computed Downhole (PEB_DH_ECO_RT) (----) 0 10
		ARC Phase Shift Resistivity 16 inch at 2 MHz, Real-Time (P16H_ECO_RT) (OHMM) 0.2 2000	Bulk Density Correction, Bottom, Real-Time Computed Downhole (DRHB_DH_ECO_RT) (G/C3) -0.25 0.25







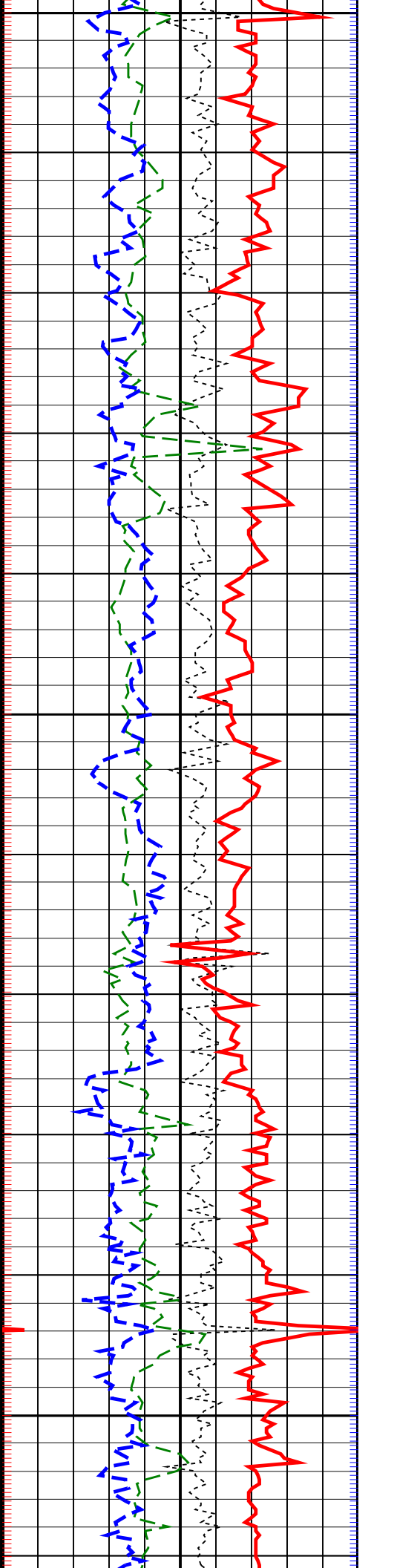
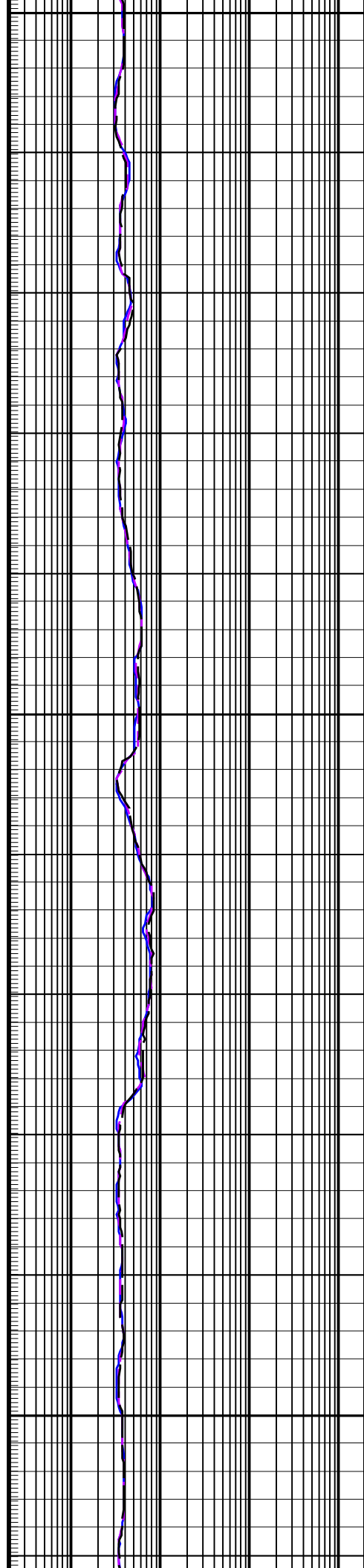


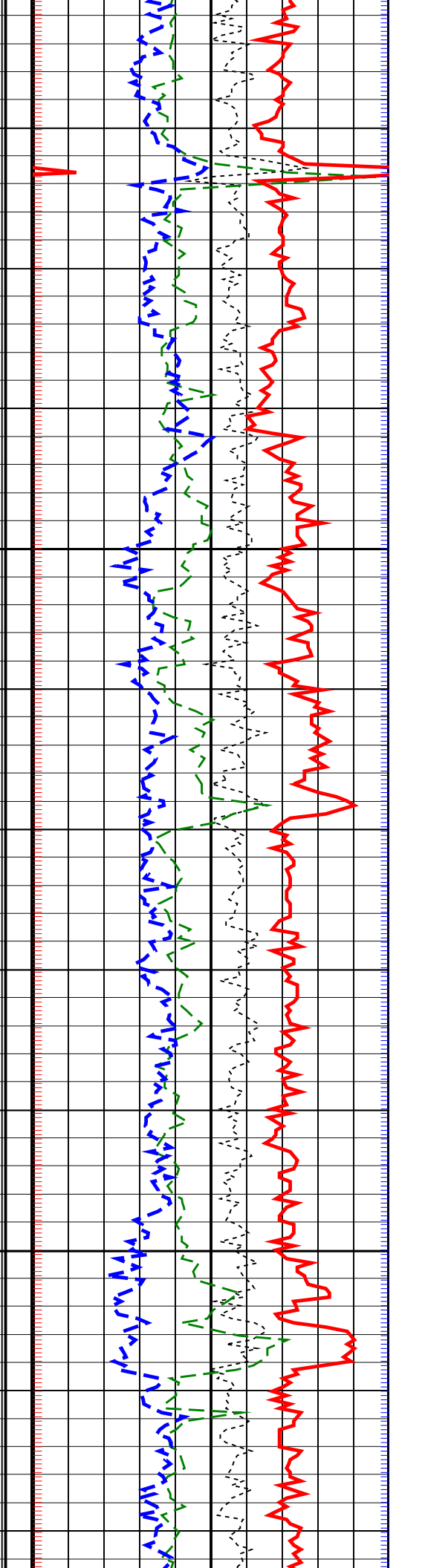
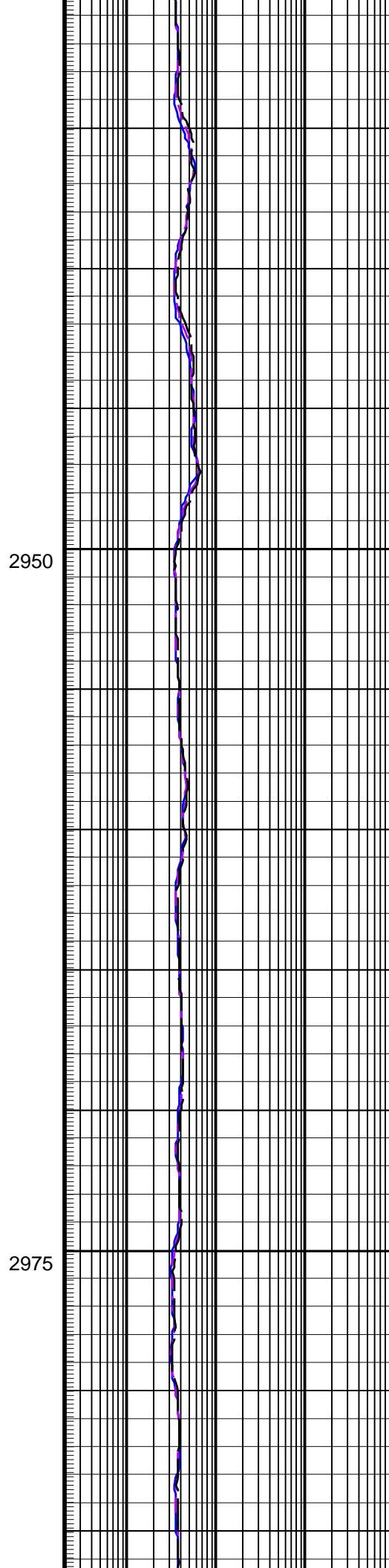
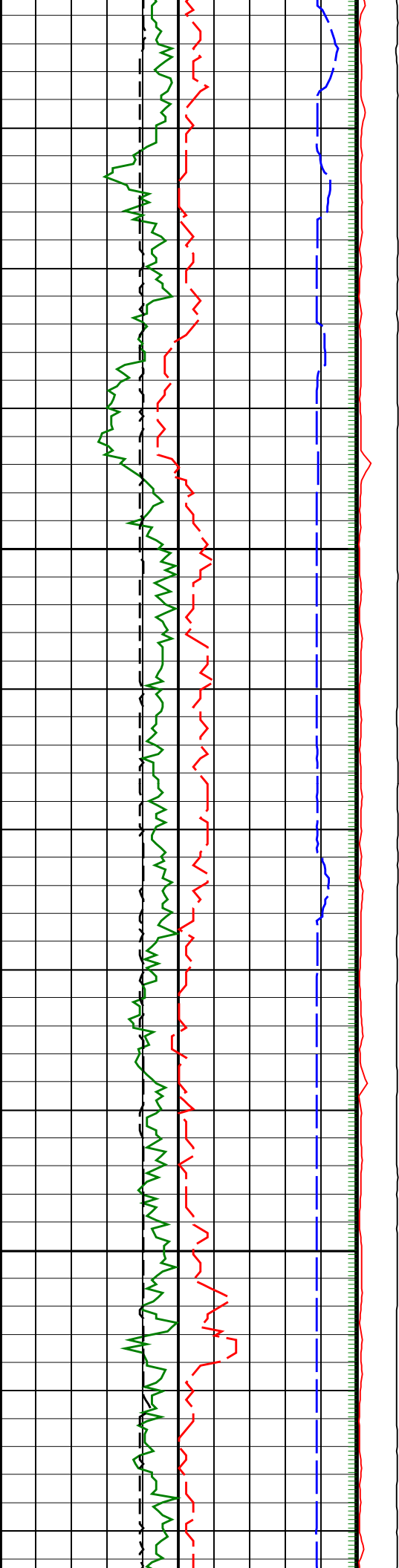


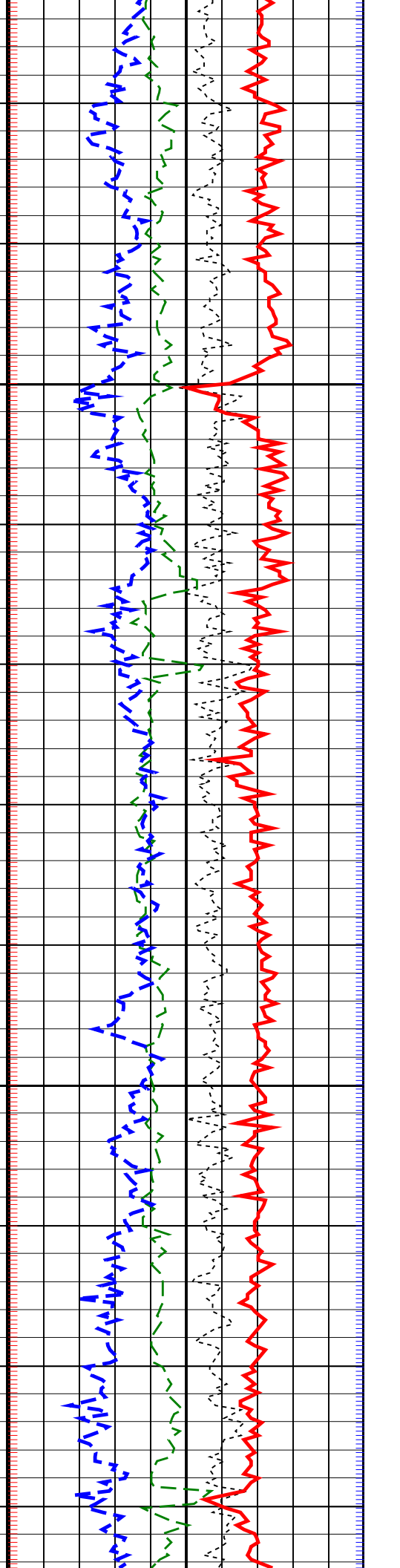
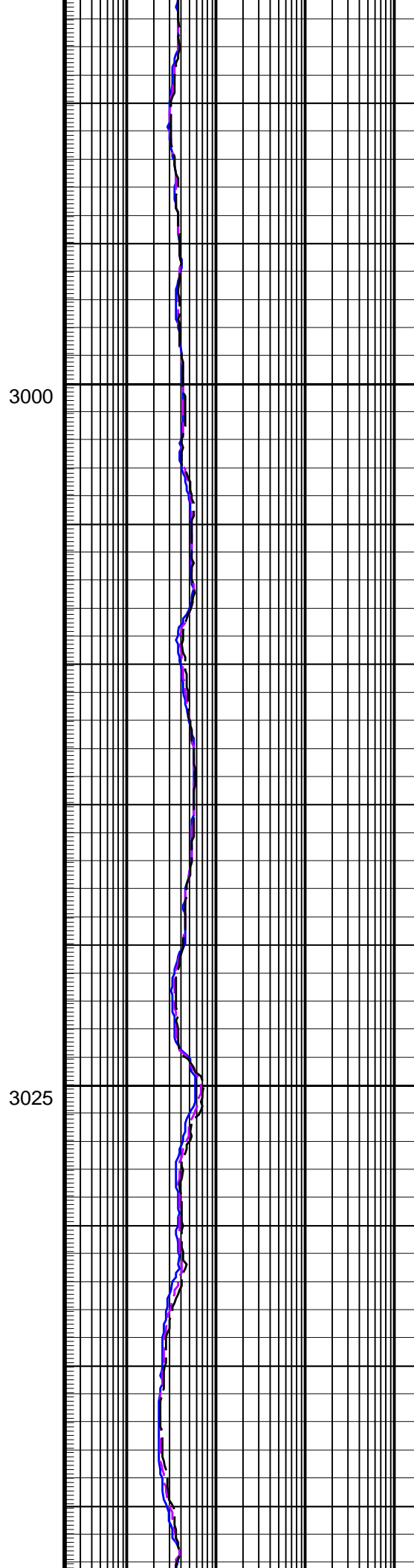
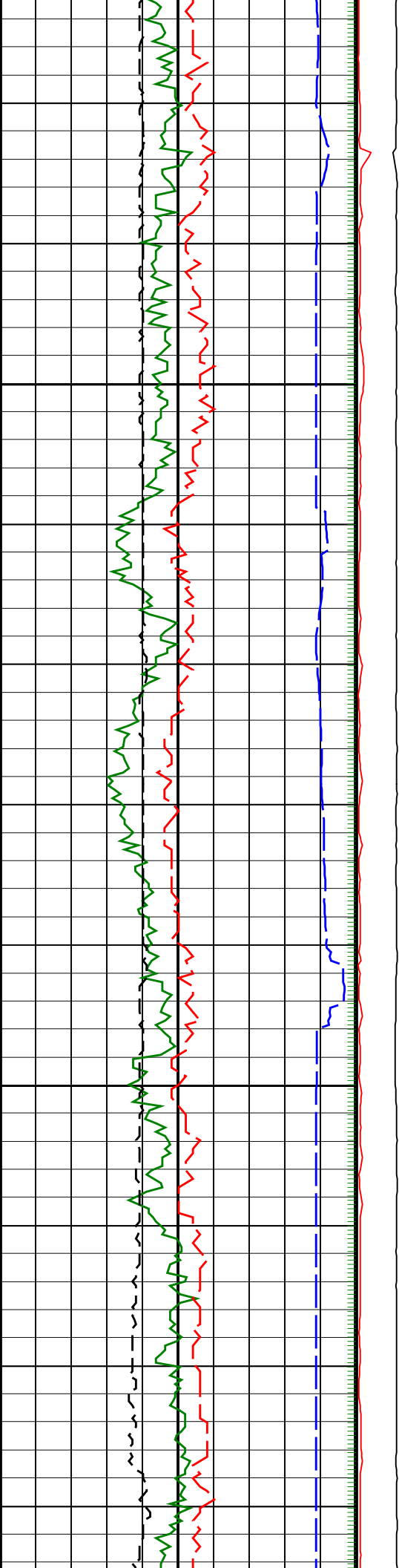
2875

2900

2925

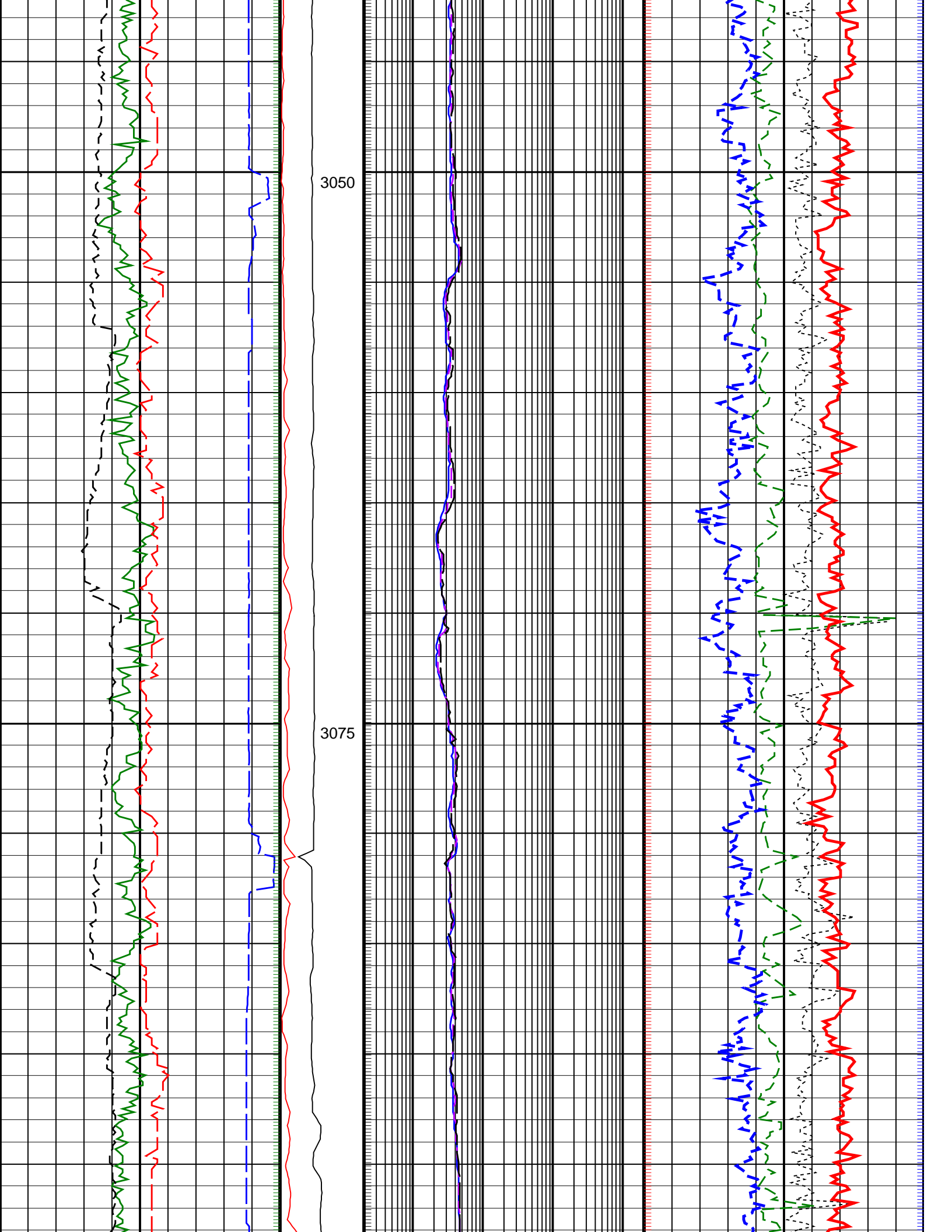


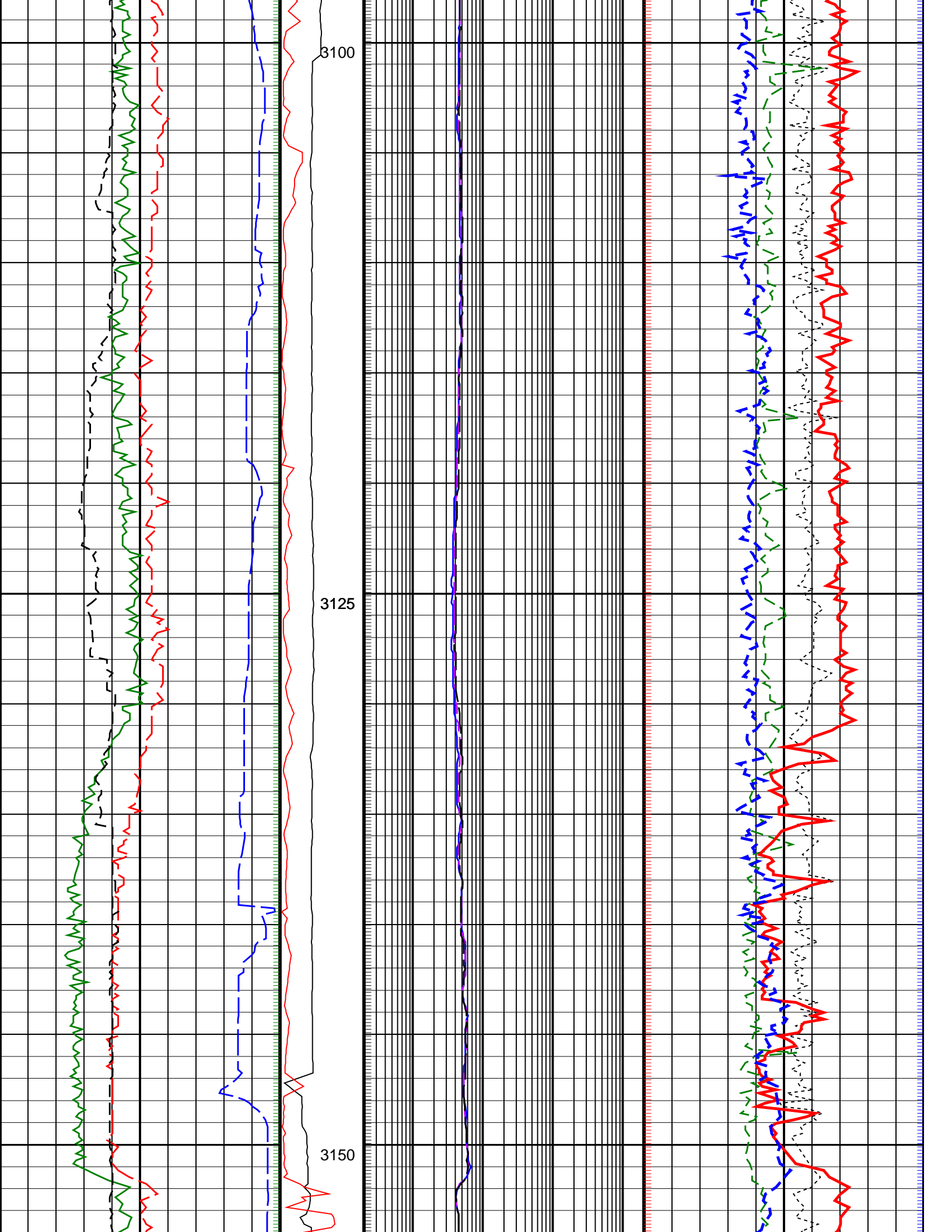


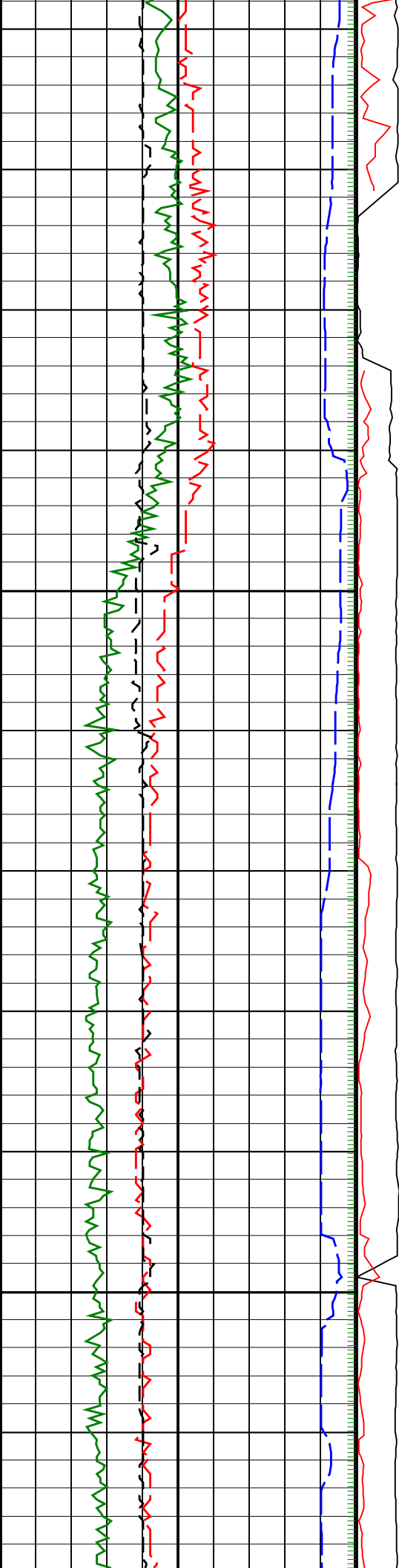


3000

3025

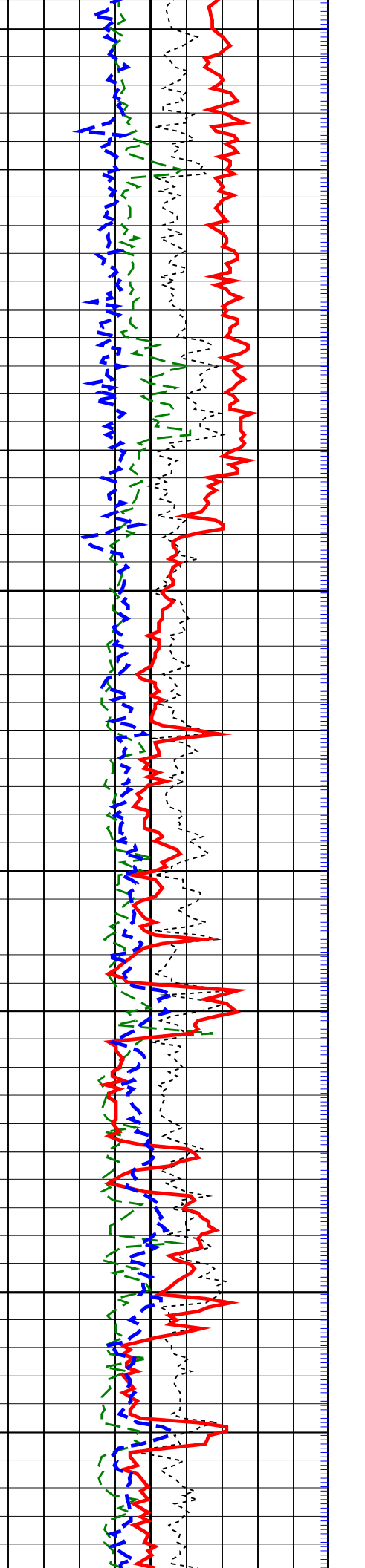
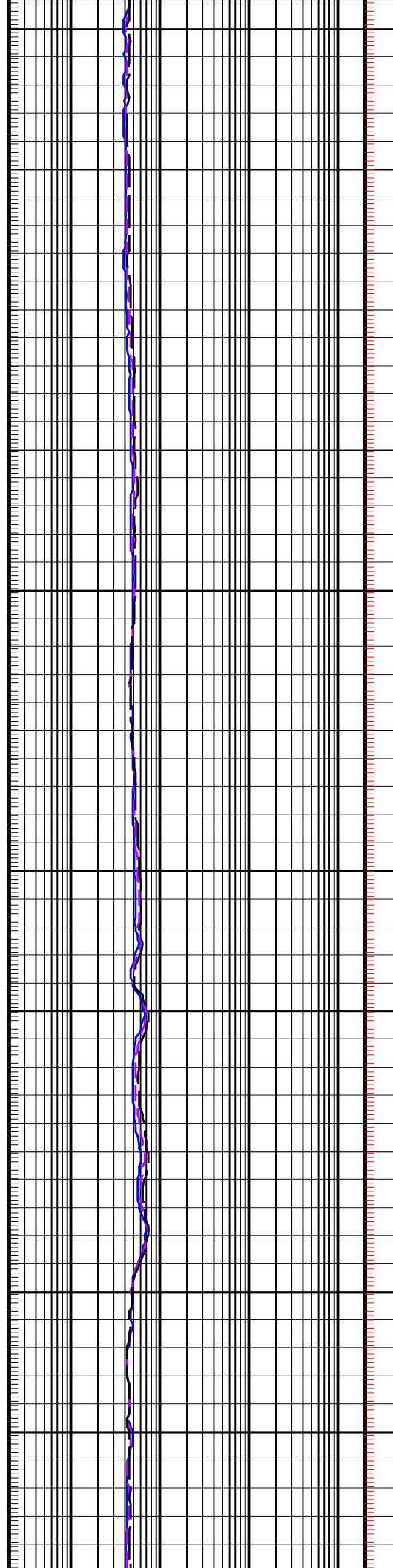


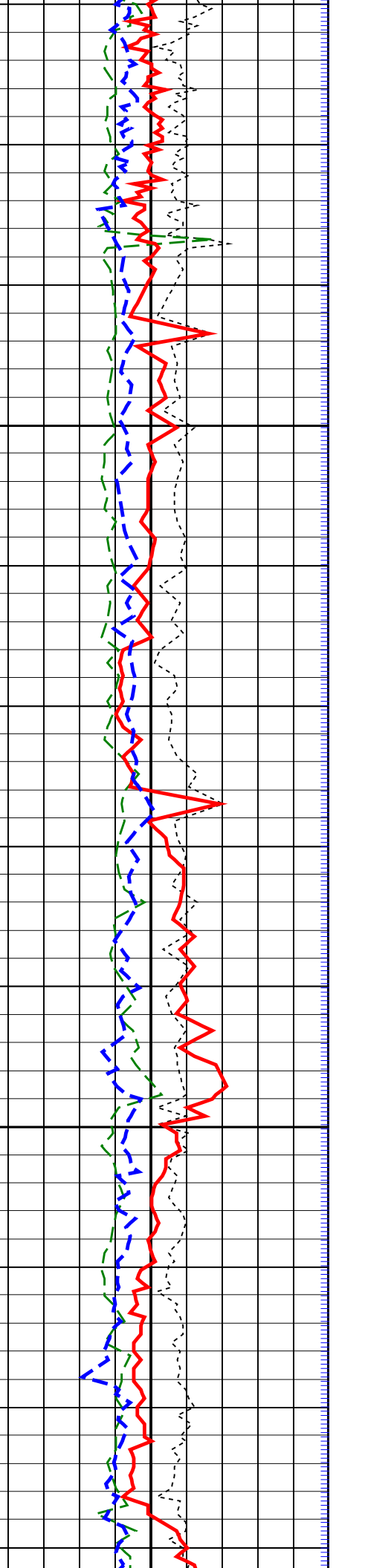
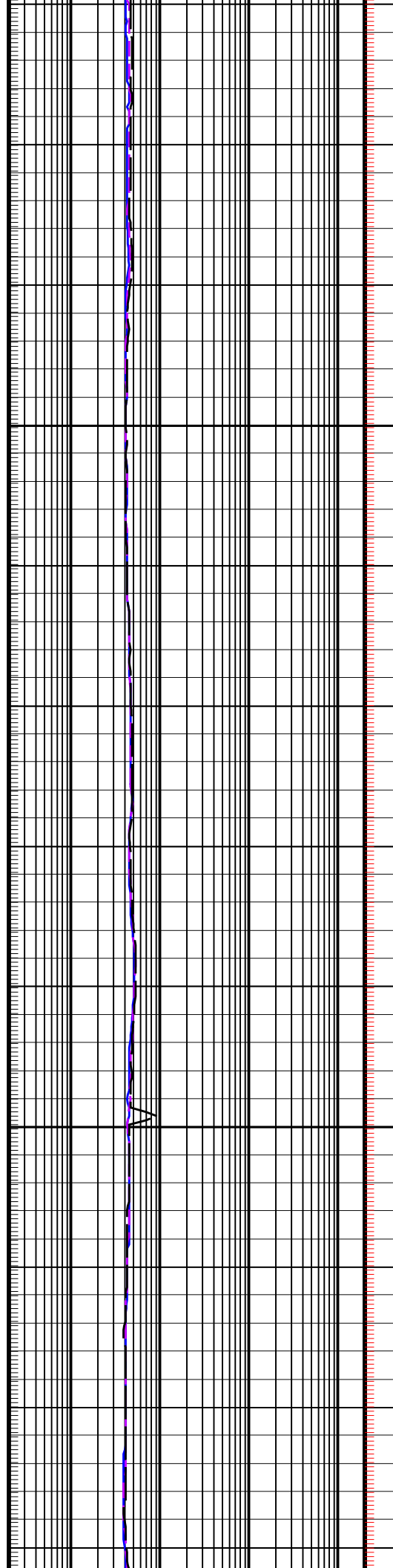
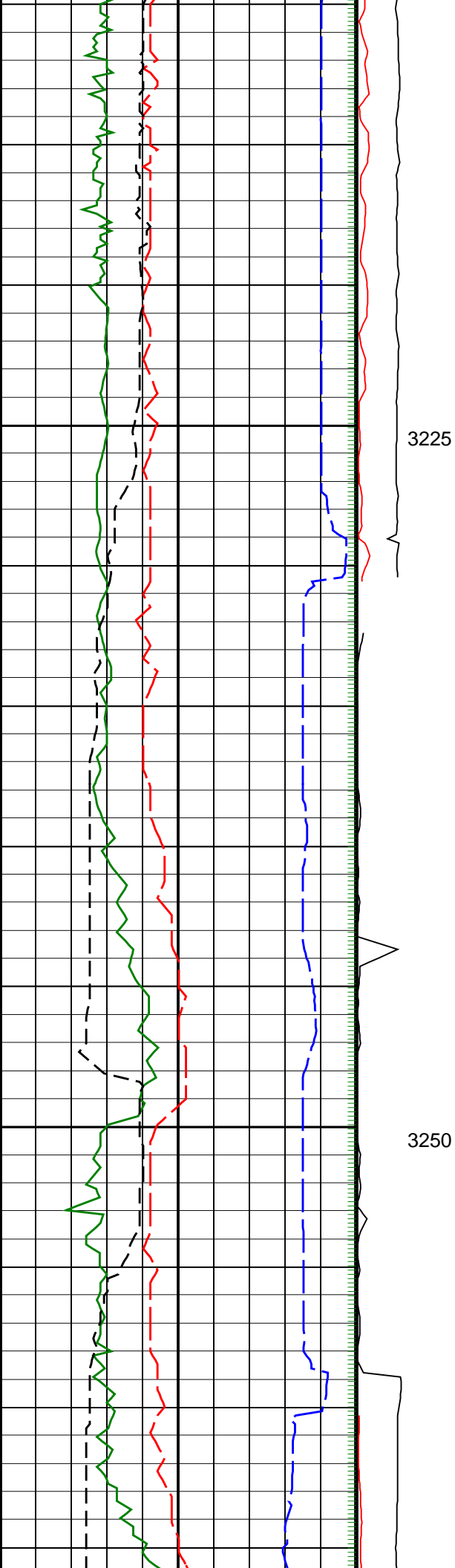


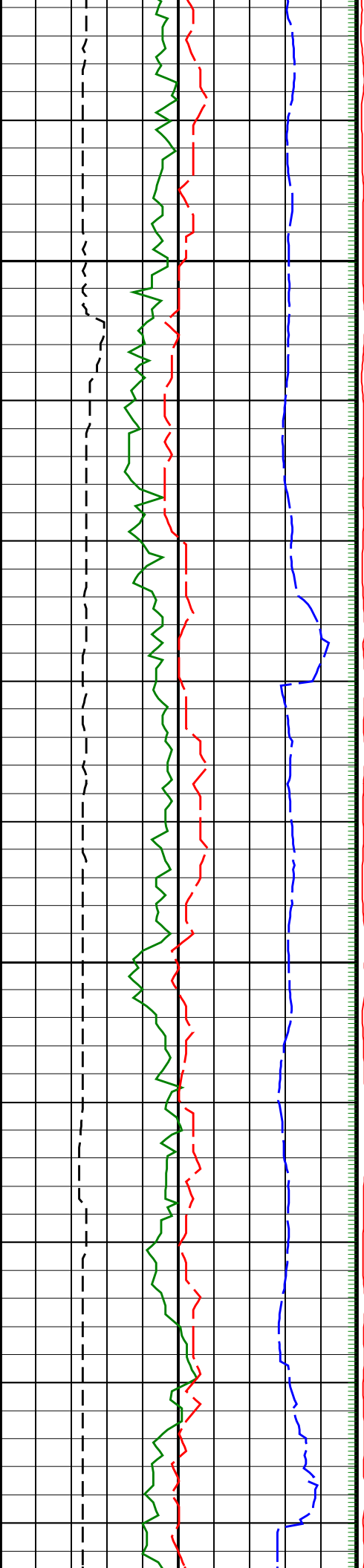


3175

3200

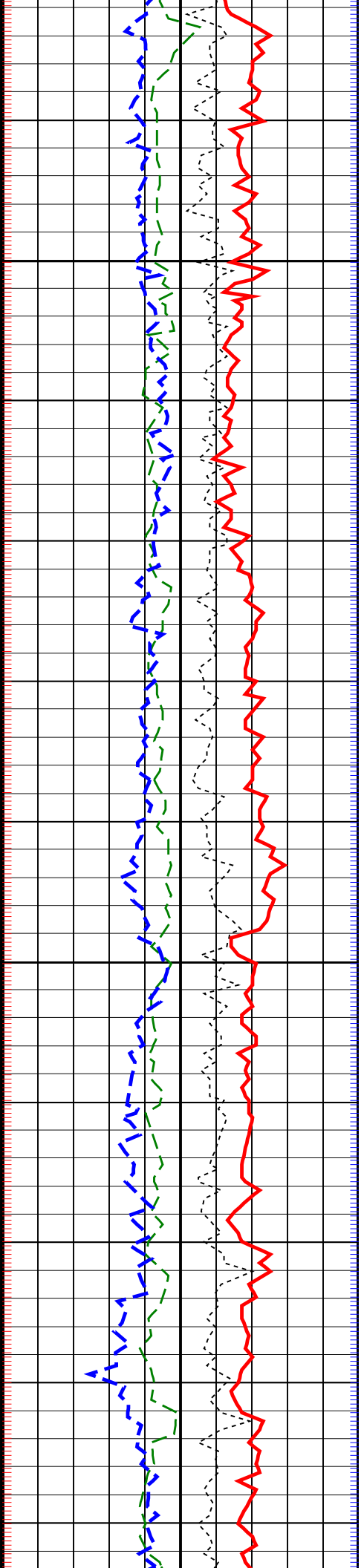
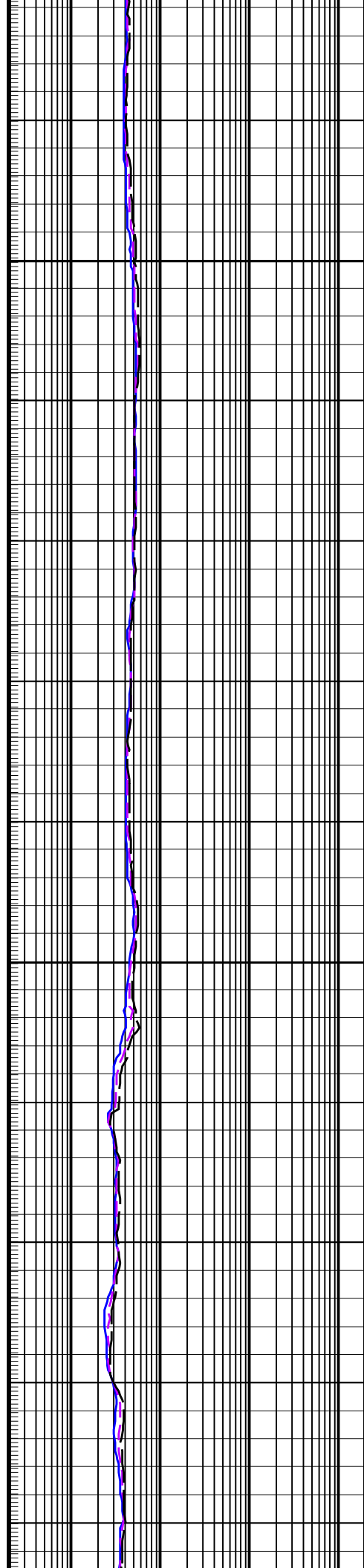


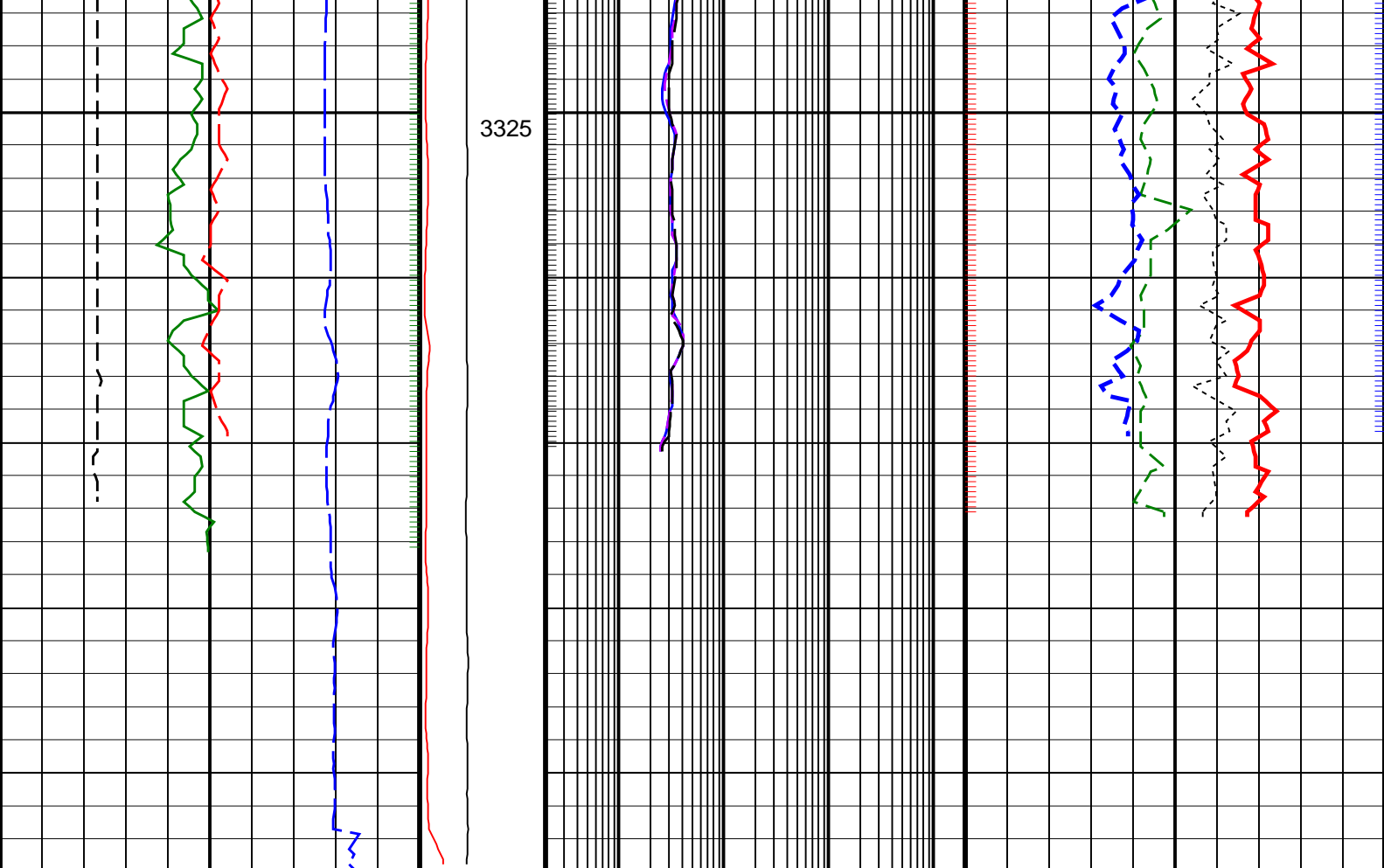




3275

3300





<div>ROP*5 (ROP5) (M/HR)</div> <div>2000</div> <div>0</div>	<div>PKPK_RPM (Stick_RT) (RPM)</div> <div>0400</div>	<div>ARC Phase Shift Resistivity 16 inch at 2 MHz, Real-Time (P16H_ECO_RT)</div> <div>0.22000</div> <div>(OHMM)</div>	<div>Bulk Density Correction, Bottom, Real-Time Computed Downhole (DRHB_ DH_ECO_RT)</div> <div>-----</div> <div>-0.250.25</div> <div>(G/C3)</div>
<div>Gamma Ray, Average, Real-Time (GRMA_ECO_RT)</div> <div>0200</div> <div>(GAPI)</div>	<div>MWD Collar RPM (CRPM_RT) (RPM)</div> <div>0400</div>	<div>ARC Phase Shift Resistivity 28 inch at 2 MHz, Real-Time (P28H_ECO_RT)</div> <div>0.22000</div> <div>(OHMM)</div>	<div>Photoelectric Factor, Bottom, Real-Time, Computed Downhole (PEB_ DH_ECO_RT)</div> <div>0-----10</div> <div>(-----)</div>
<div>Raw Formation Sigma, Average, Real-Time, Computed Downhole (RFSA_ DH_ECO_RT)</div> <div>050</div> <div>(CU)</div>		<div>ARC Phase Shift Resistivity 40 inch at 2 MHz, Real-Time (P40H_ECO_RT)</div> <div>0.22000</div> <div>(OHMM)</div>	<div>Bulk Density, Bottom, Real-Time, Computed Downhole (ROBB_DH_ECO_ RT)</div> <div>1.852.85</div> <div>(G/C3)</div>
<div>Ultrasonic Caliper, Average Diameter, Real-Time, Computed Downhole (UCAV_DH_ECO_RT)</div> <div>616</div> <div>(IN)</div>			<div>Thermal Neutron Porosity, Average, Real-Time (TNPH_ECO_RT)</div> <div>45-15</div> <div>(PU)</div>

PIP SUMMARY			
+ Gamma Ray Samples		Density Samples +	
+ Resistivity Samples		Neutron Samples +	